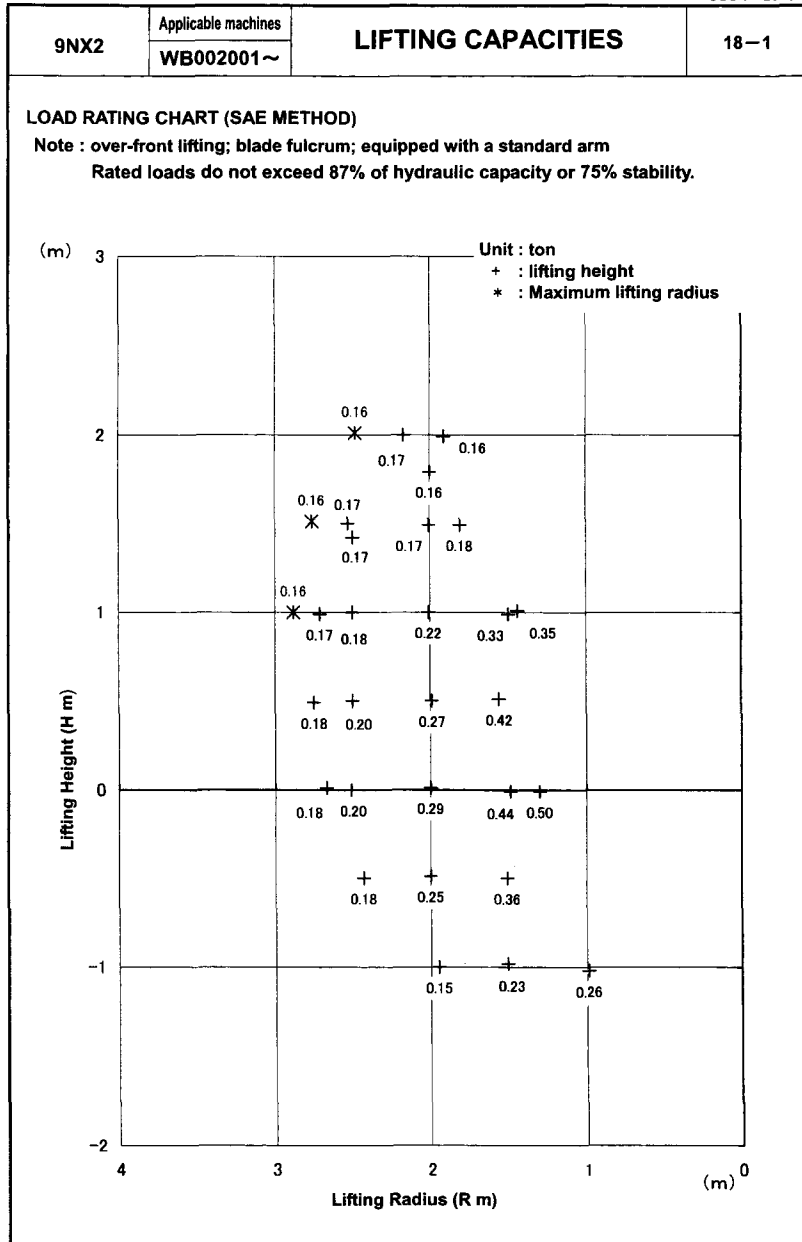
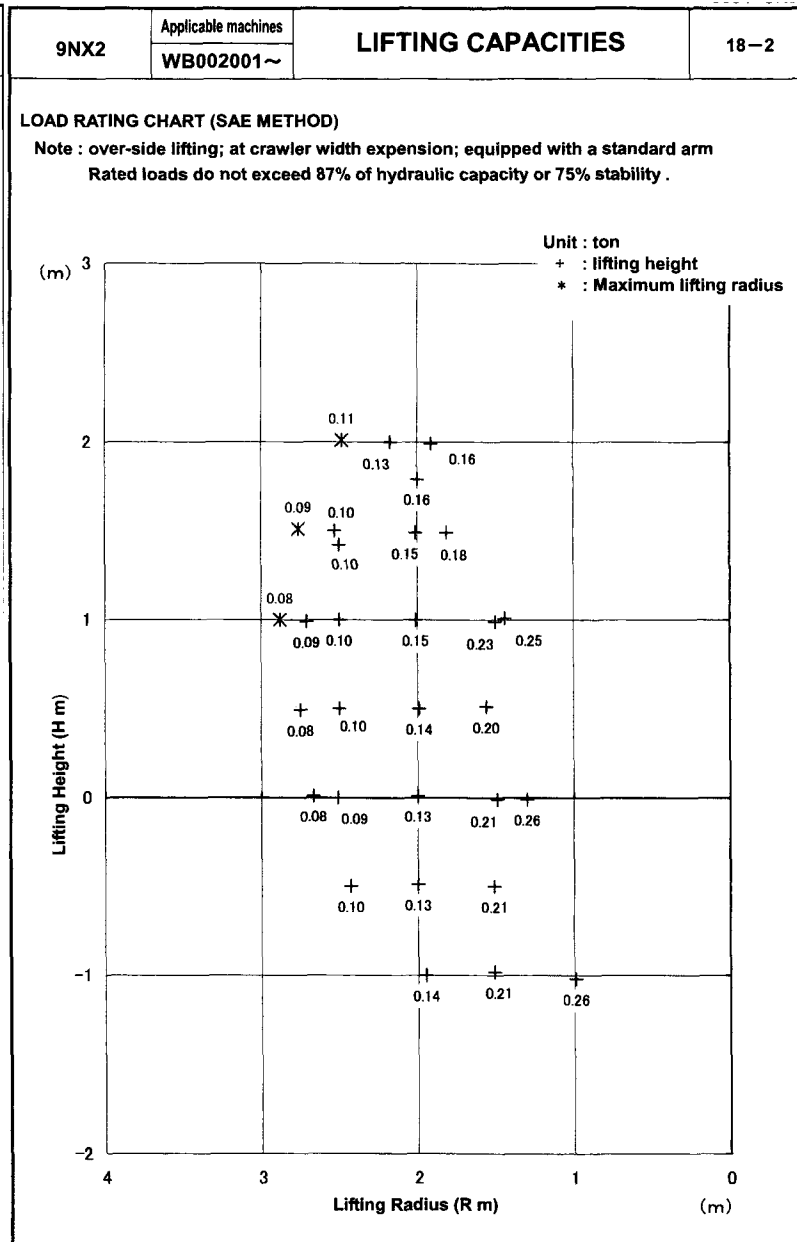


9NX2 with Std. Arm

Over Front



Over Side



Conversion Chart

1m = 3.3ft
 2m = 6.6ft
 3m = 9.9ft
 4m = 13.2ft

0.08t = 176lb
 0.09t = 198lb
 0.10t = 220lb
 0.11t = 243lb
 0.13t = 287lb
 0.15t = 331lb
 0.18t = 397lb
 0.20t = 441lb
 0.25t = 551lb