



BACKPACK VIBRATOR

INSTRUCTION MANUAL

SAFETY, ASSEMBLY, AND MAINTENANCE INSTRUCTIONS FOR MODEL:

Model: Pro 50-4S



NORTHROCK INDUSTRIES, INC.
31 CROSSWAY EAST
BOHEMIA, NY 11716

TEL: 1-800-989-8423
1-631-924-6130
FAX: 1-800-315-1277
1-631-924-6369

WARNING

When using concrete vibrators as with any gasoline powered tool, basic safety precautions should always be followed to reduce the risk of fire and personal injury. Read all the safety, operating, and maintenance instructions provided in the Honda engine owners manual along with the assembly instructions below before attempting to start the backpack engine.

Assembly Instructions

Your purchase of a Northrock Pro50-4S concrete vibrator shows your appreciation for the highest quality construction equipment available. To maximize this tool's life please follow these simple assembly and maintenance instructions listed.

- 1) Secure the throttle bracket to the frame using the two screws, lock washers, and nuts provided. The throttle cable is shipped attached from the factory.
- 2) All Pro50-4S backpacks come standard with quick disconnect. Assemble the quick disconnect adapter to the flexible shaft by inserting the male flexible core end into the female adapter on the quick disconnect adapter, and then threading the adapter on to the flexible shaft casing using a pipe wrench to secure it.
- 3) Next assemble the flexible shaft to the vibrator head in the same manner as the quick disconnect adapter, except on this end apply an adhesive sealant to the threads before assembly to form a water tight seal.
- 4) Adjust the shoulder straps on the power unit for the most comfortable fit.
- 5) Attach the flexible shaft to the power unit by lining up the square drive and then lifting the spring pin to insert the adapter. Once the adapter is inserted spin the shaft until you see that the pin has inserted. When the pin is inserted properly the flexible shaft should not be able to spin.
- 6) The vibrator is now ready to be oiled and fueled. Please refer to the Honda owners manual for proper start up procedure.

Maintenance Instructions

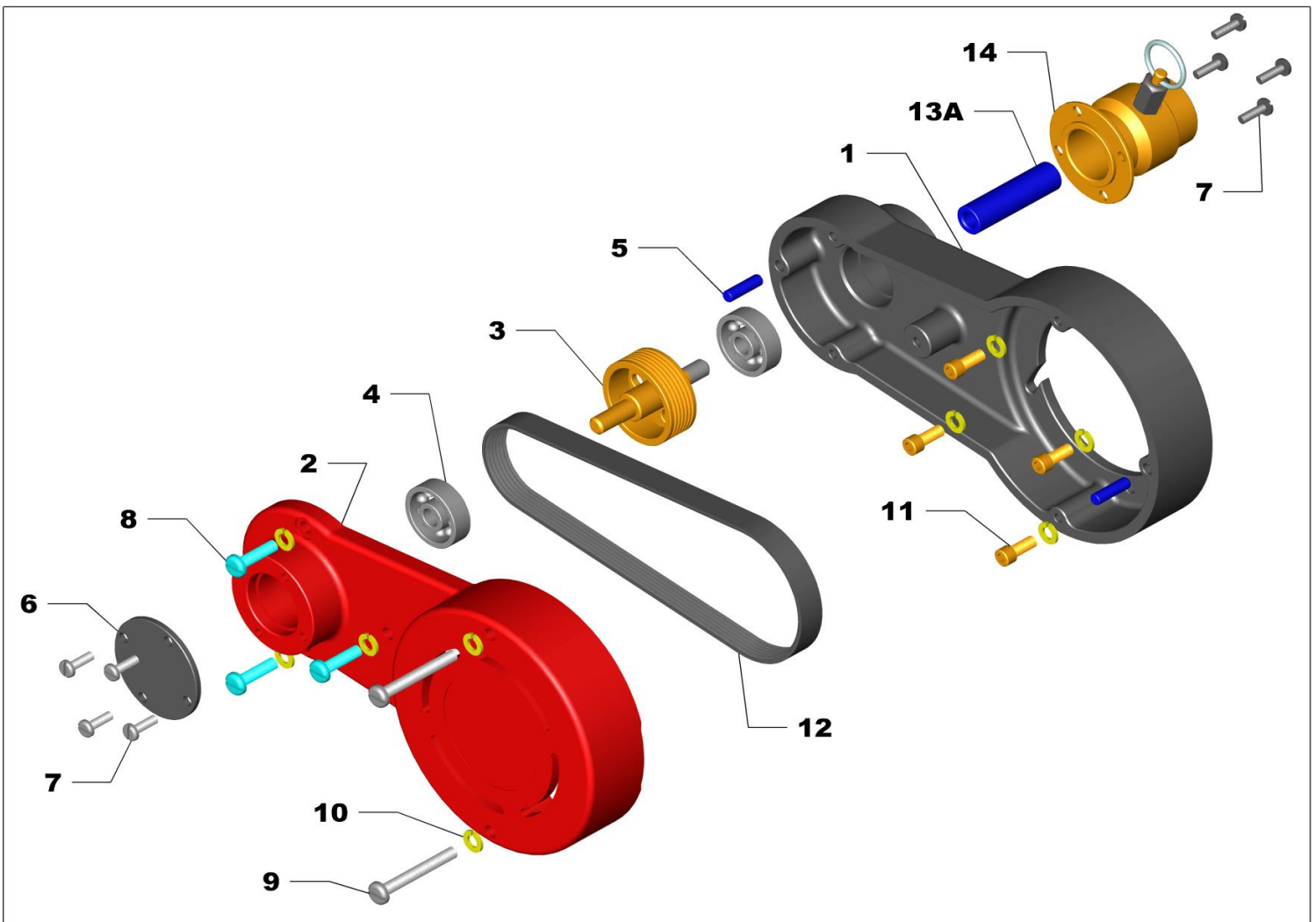
Engine: Refer to the Honda owners manual attached.

Shafts: Lubricate the flexible shaft approximately every fifty hours of operation by removing the inner core, wiping it with a clean cloth, and reinstalling it with 1/16" coating of high quality lithium grease.

Heads: Heads are factory sealed and require no maintenance.

TRANSMISSION

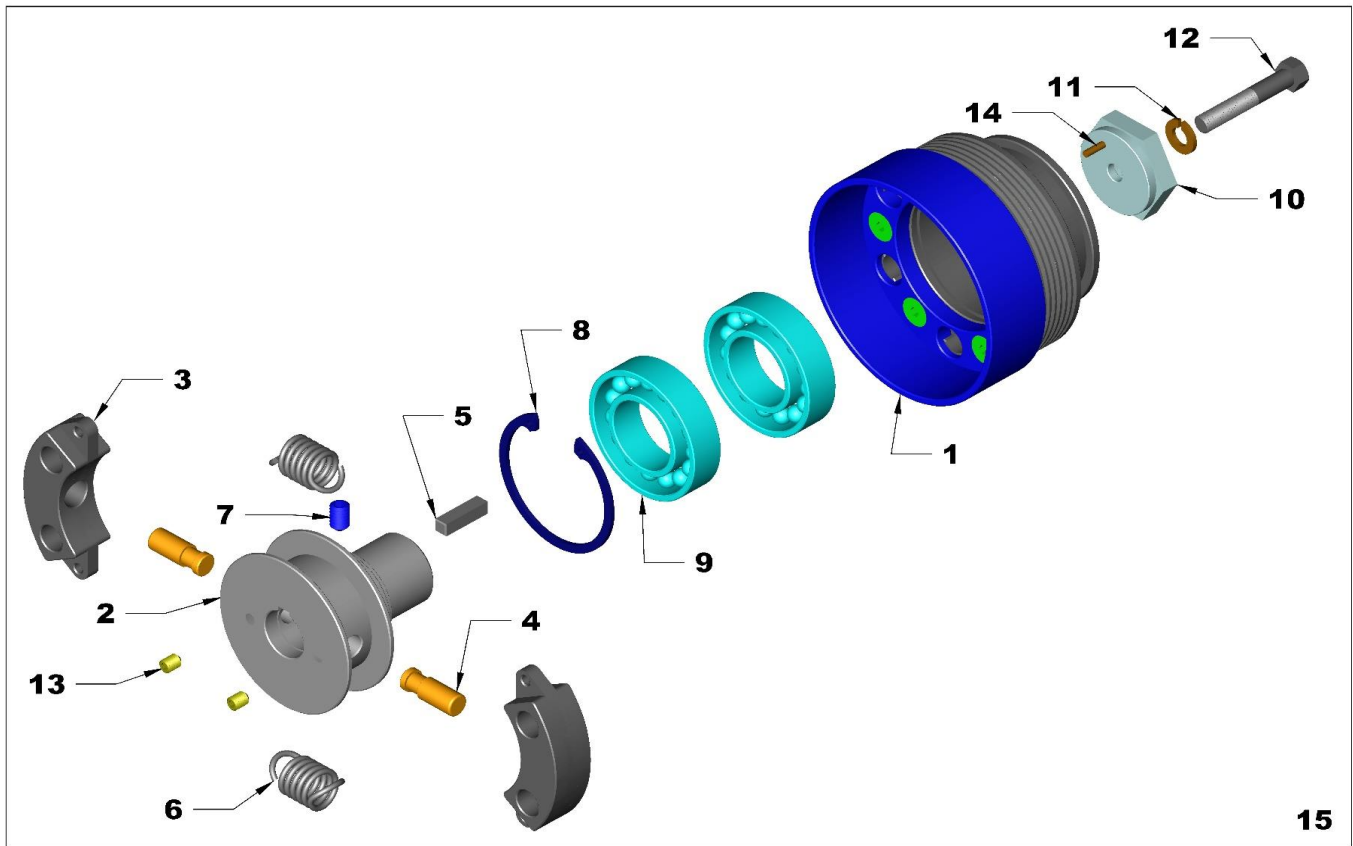
Ref.	Part No.	DESCRIPTION	QTY
1	635A1	TRANSMISSION BOX	1
2	635B1	TRANSMISSION BOX COVER	1
3	295N1	DRIVEN PULLEY	1
4	140C300	BEARING, DOUBLE SEALED	2
5	180G87	DOWEL PIN	2
6	215M1	END CAP	1
7	190F150	SCREW	8
8	190F208	SCREW	3
9	190F220	SCREW	2
10	285A250	LOCK WASHER	9
11	320B206	SOCKET CAP SCREW	4
12	390B1	MICRO V BELT	1
13A	160CW1	L.H. DRIVE CORE ADAPTER	1
13B	160CW2 (not shown)	R.H. DRIVE CORE ADAPTER	1
14	150DE1	CASING ADAPTER	1



NOTE: OTHER STYLES AVAILABLE UPON REQUEST.

CLUTCH ASSEMBLY

Ref.	Part No.	DESCRIPTION	QTY
1	295S1	PULLEY, CLUTCH DRUM ASSEMBLY	1
2	630A1	CLUTCH ADAPTER	1
3	625A1	CLUTCH SHOE	2
4	180F308	DOWEL PIN	2
5	575D75	KEY	1
6	465D1	CLUTCH SPRING	2
7	320A203	SET SCREW	1
8	255F1	RETAINING RING	1
9	140D005	BEARING, DOUBLE SHIELDED	2
10	370D1	WASHER	1
11	285A250	LOCK WASHER	1
12	280B150	SCREW	1
13	190B125	SET SCREW	2
14	180A1	SPRING PIN	1
15	25BA1	COMPLETE CLUTCH ASSEMBLY	1



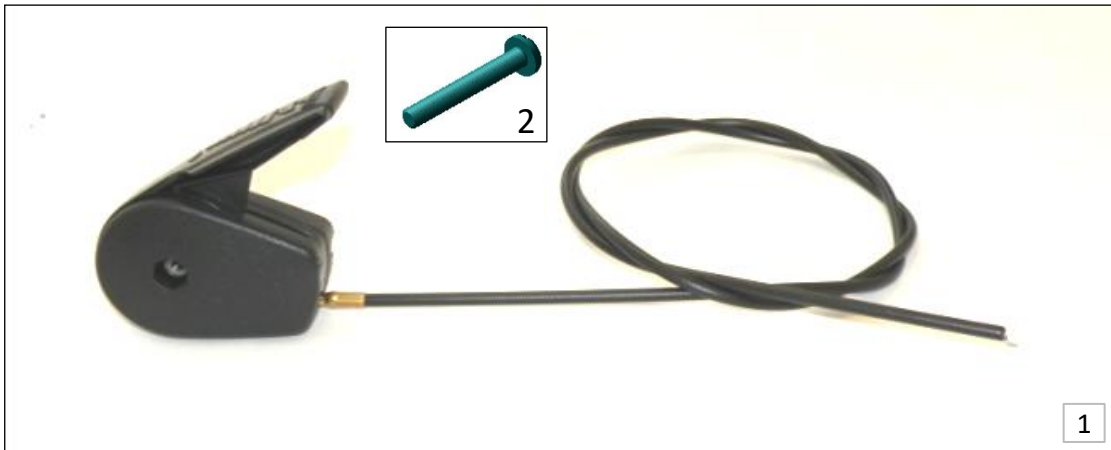
FRAME

Ref.	Part No.	Description	Qty.
1	200AJ1	STAND-OFFS ENGINE PLATE	4
2	211F1	NUT, FRAME	1
3	215BR1	ENGINE MOUNTING PLATE	1
4	190J30	SCREW ENGINE MOUNT	4
5	200AW1	SPACER, FRAME	1
6	370A312	WASHER	1
7	285A312	LOCK WASHER	1
8	280A312	BOLT	1
9	440AT1	FRAME	1
10	445E1	PAD, FRAME	1
11	440AV1	COMPLETE FRAME ASSEMBLY	1



THROTTLE ASSEMBLY

Ref.	Part No.	Description	Qty.
1	605F1	THROTTLE CONTROL ASSEMBLY	1
2	190F217	SCREW	1



4-STROKE ENGINE

Ref.	Part No.	Description	Qty.
1	555C2	ENGINE, HONDA GXH50	1





NORTHROCK

NORTHROCK INDUSTRIES, INC.



Made in USA



NORTHROCK
4-Stroke
Backpack
Vibrator

- BACKPACK VIBRATORS ·
- ELECTRIC VIBRATORS ·
- REBAR ROCKERS ·
- CEILING GRINDERS ·
- HAND-HELD GRINDERS ·
- POWER SCREEDS ·

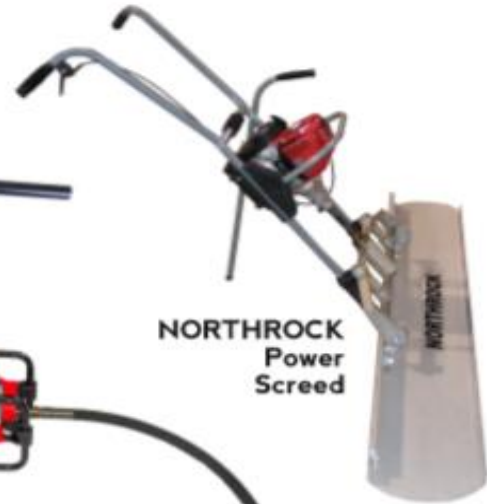
NORTHROCK
Rebar
Rocker



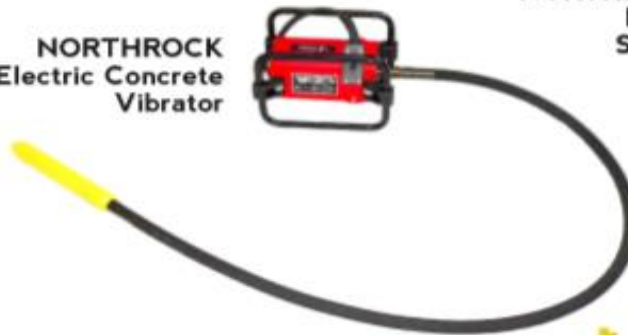
NORTHROCK
Ceiling
Grinder



NORTHROCK
Power
Screed



NORTHROCK
Electric
Concrete
Vibrator



NORTHROCK
Hand-Held
Grinders



PH 800-989-8423 · www.northrockindustries.com · Info@northrockindustries.com