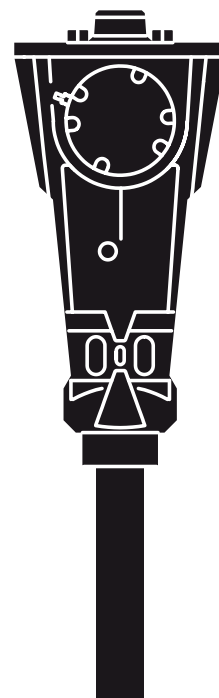


Spare parts list Hydraulic breakers

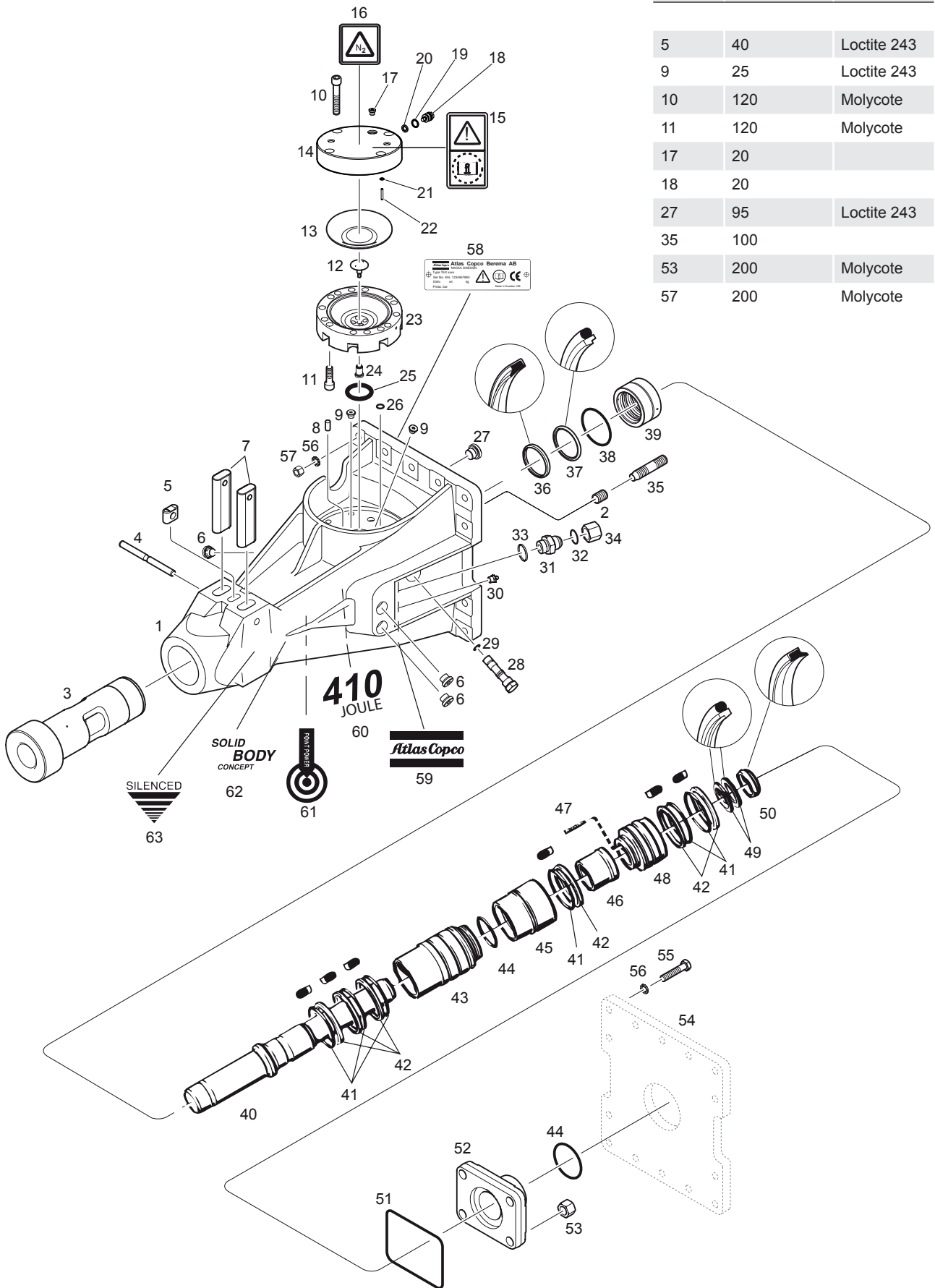


Contents

Spare parts list	5
Seal kit 3315 1501 90	8
Accumulator repair kit 3315 3430 90	8
Lower hammer part kit 3315 3521 50	8
Optional equipment	9
Working tools	9

No.	Tightening torque (Nm)	Description
-----	------------------------	-------------

5	40	Loctite 243
9	25	Loctite 243
10	120	Molycote
11	120	Molycote
17	20	
18	20	
27	95	Loctite 243
35	100	
53	200	Molycote
57	200	Molycote



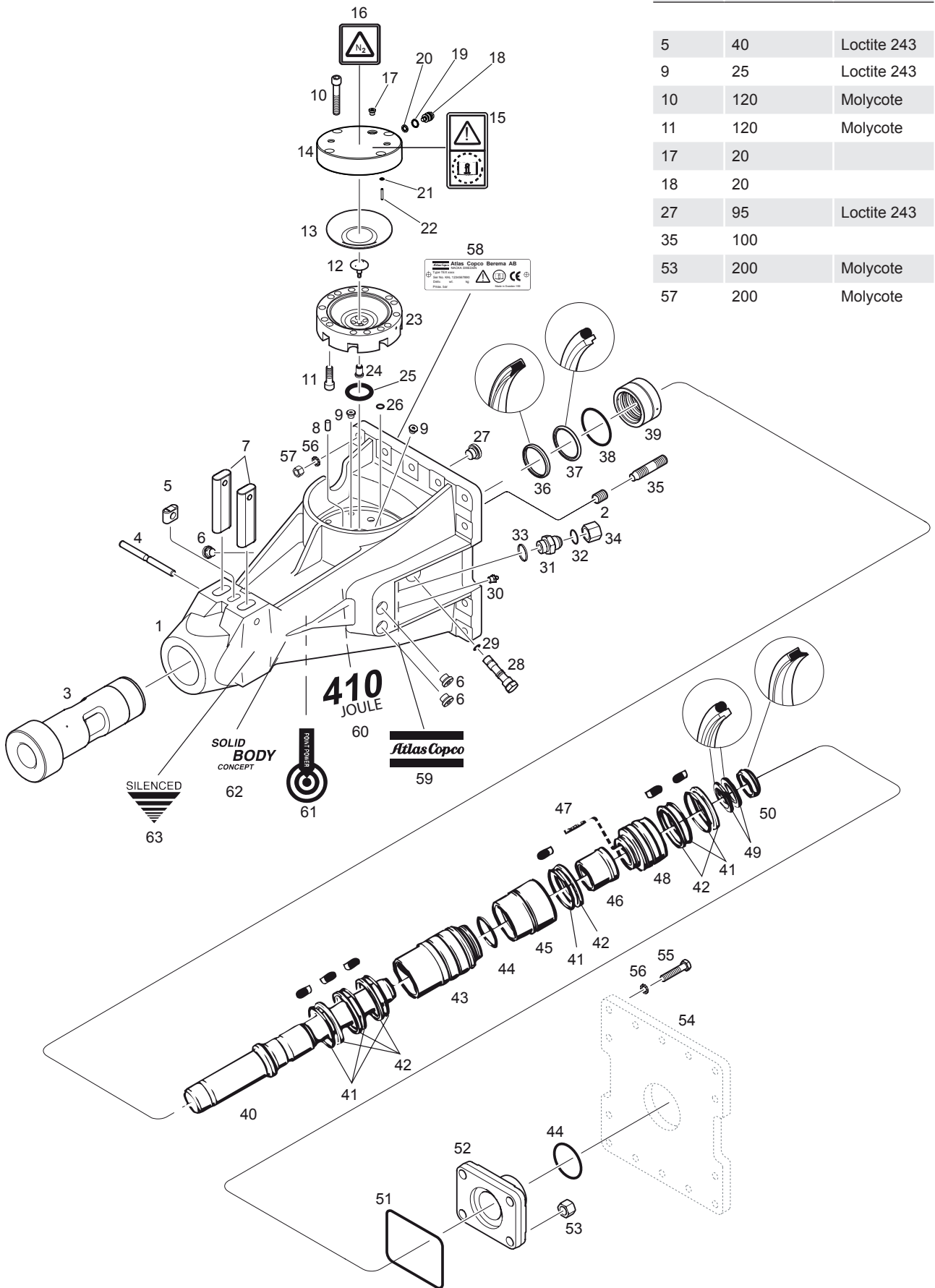
Spare parts list

No.	Ordering No.	Quantity		Description	Dimensions	
		SBC410-II	SBC410-IIS			
1	3315 2120 00	1	-	Hammer body, complete	Not silenced	
1	3315 2439 00	-	1	Hammer body, complete	Silenced	
2	0259 2061 00	4	4	– Thread insert	M16 x 1.5D	
3	3315 2007 00	1	1	Bushing		
3	3315 2353 00	1	1	Oversize bushing	1mm oversize	
4	3315 1350 00	1	1	Lock pin		
4	0108 1691 27	1	1	Conex pin	Option, hot environment	
5	3315 1419 00	1	1	Lock buffer		
6	0686 6442 07	3	3	Plug	VSTI G 1/4-ED	
7	3315 1349 00	2	2	Tool retainer		
8	0102 0405 00	1	1	Parallel pin	10 x 20	
9	0686 3718 05	2	2	Plug	VSTI R 1/8-ED	
10	0211 1965 36	4	4	Screw, Unbrako	MC6S 12 x 80-12.9	
(11–24)	3315 3430 80	1	1	Accumulator, complete		
11	0211 1965 34	8	8	– Screw, Unbrako	MC6S 12 x 45-12.9	
12	3315 0223 00	1	1	– Diaphragm support		
13	3315 2890 00	1	1	– Diaphragm		
14	3315 3431 00	1	1	– Accumulator house		
15	3115 2629 00	1	1	– Safety label		
16	3115 2630 00	1	1	– Safety label		
17	0686 3718 05	1	1	– Plug	VSTI R 1/8-ED	
18	3315 2921 00	1	1	– Charge valve		
19	0663 2120 00	1	1	– O-ring	13.3 x 2.4	70 shore
20	0661 1000 24	1	1	– Seal washer		
21	0101 4140 00	1	1	– Parallell pin	D4 x 25	
22	0663 2111 00	1	1	– O-ring	4.3 x 2.4	70 shore
23	3315 3430 00	1	1	– Diaphragm seat		
24	3315 2003 00	1	1	– Plunger		
25	0663 6135 01	1	1	O-ring	54.5 x 3	90 shore
26	0663 2100 79	1	1	O-ring	10.1 x 1.6	90 shore
27	0686 3718 01	1	1	Plug	VSTI G 3/8-ED	
28	— **)	1	1	Restrictor		

**) Restrictor (No. 28)
 3315 2317 02
 3315 2317 04
 3315 2317 06
 3315 2317 08 (Standard)

No.	Tightening torque (Nm)	Description
-----	------------------------	-------------

5	40	Loctite 243
9	25	Loctite 243
10	120	Molycote
11	120	Molycote
17	20	
18	20	
27	95	Loctite 243
35	100	
53	200	Molycote
57	200	Molycote



No.	Ordering No.	Quantity		Description	Dimensions	
		SBC410-II	SBC410-IIS			
29	0663 6118 00	1	1	O-ring	11.1 x 1.6	70 shore
30	0544 2153 00	1	1	Lubricating nipple	G 1/4 A	
31	0570 7000 03	2	2	Nipple, complete	13/16-16 UN G 1/2 A	
32	0663 9055 01	2	2	– O-ring	12.42 x 1.78	90 shore
33	0664 0000 03	2	2	– Seal-ring		
34	0570 7000 19	2	2	Cap	13/16-16 UN	
35	3315 1547 00	4	4	Stud		
36	0665 9100 62	1	1	Wiper		
37	0665 0701 03	1	1	Piston seal		
38	0663 6139 01	1	1	O-ring	74.5 x 3	90 shore
39	3315 1235 00	1	1	Piston guide		
40	3315 1437 00	1	1	Piston		
41	0663 6140 01	6	6	O-ring	79.5 x 3	90 shore
42	3315 1472 00	6	6	Back-up ring		
43	3315 1456 00	1	1	Liner		
44	0663 6138 00	2	2	O-ring	69.5 x 3	70 shore
45	3315 1457 00	1	1	Valve housing		
46	3315 1236 00	1	1	Main valve		
47	3315 1237 00	6	6	Plunger		
48	3315 2043 00	1	1	Seal housing		
49	0665 0700 94	2	2	Piston seal		
50	3176 5845 00	1	1	Wiper		
51	0663 2100 58	1	1	O-ring	142.47 x 3.53	70 shore
52	3315 1243 00	1	1	End piece		
53	0291 1180 02	4	4	Nut	M16 Heli -Coil, mid-grip	
54	3315 2443 00	1	1	Base plate, option		
(55–57)	3315 2655 92	1	1	Screw set, complete		
55	— *)	14	14	– Screw	M6S 16 x 75 - 8.8FZB	
56	— *)	28	28	– Lock washer	Nord Lock M16	
57	— *)	14	14	– Nut	M16 - 8FZB	
58	— *)	1	1	CE-plate		
59	3315 2263 00	1	1	Atlas Copco sign		
60	3315 2248 00	1	1	Product sign		
61	3315 2260 00	1	1	Point Power sign		
62	3315 2256 00	2	2	SBC sign		
63	3315 2258 00	-	2	Silenced sign		

*) Not delivered separately

Seal kit 3315 1501 90

No.	Ordering No.	Quantity		Description	Dimensions	
		SBC410-II	SBC410-IIS			
	3315 1501 90	1	1	Seal set, complete		
19	0663 2120 00	1	1	– O-ring	13.3 x 2.4	70 shore
20	0661 1000 24	1	1	– Seal washer		
22	0663 2111 00	1	1	– O-ring	4.3 x 2.4	70 shore
25	0663 6135 01	1	1	– O-ring	54.5 x 3	90 shore
26	0663 2100 79	1	1	– O-ring	10.1 x 1.6	90 shore
29	0663 6118 00	1	1	– O-ring	11.1 x 1.6	70 shore
32	0663 9055 01	1	1	– O-ring	12.42 x 1.78	90 shore
33	0664 0000 03	2	2	– Seal-ring		
36	0665 9100 62	1	1	– Wiper		
37	0665 0701 03	1	1	– Piston seal		
38	0663 6139 01	1	1	– O-ring	74.5 x 3	90 shore
41	0663 6140 01	6	6	– O-ring	79.5 x 3	90 shore
42	3315 1472 00	6	6	– Back-up ring		
44	0663 6138 00	2	2	– O-ring	69.5 x 3	70 shore
49	0665 0700 94	2	2	– Piston seal		
50	3176 5845 00	1	1	– Wiper		
51	0663 2100 58	1	1	– O-ring	142.47 x 3.53	70 shore

Accumulator repair kit 3315 3430 90

No.	Ordering No.	Quantity		Description	Dimensions	
		SBC410-II	SBC410-IIS			
	3315 3430 90	1	1	Accumulator repair kit, complete		
12	3315 0223 00	1	1	– Diaphragm support		
13	3315 2890 00	1	1	– Diaphragm		
17	0686 3718 05	1	1	– Plug	VSTI R 1/8-ED	
18	3315 2921 00	1	1	– Charge valve		
19	0663 2120 00	1	1	– O-ring	13.3 x 2.4	70 shore
20	0661 1000 24	1	1	– Seal washer		
21	0101 4140 00	1	1	– Parallell pin	D4 x 25	
22	0663 2111 00	1	1	– O-ring	4.3 x 2.4	70 shore
24	3315 2003 00	1	1	– Plunger		
25	0663 6135 01	1	1	– O-ring	54.5 x 3	90 shore
26	0663 2100 79	1	1	– O-ring	10.1 x 1.6	90 shore

Lower hammer part kit 3315 3521 50

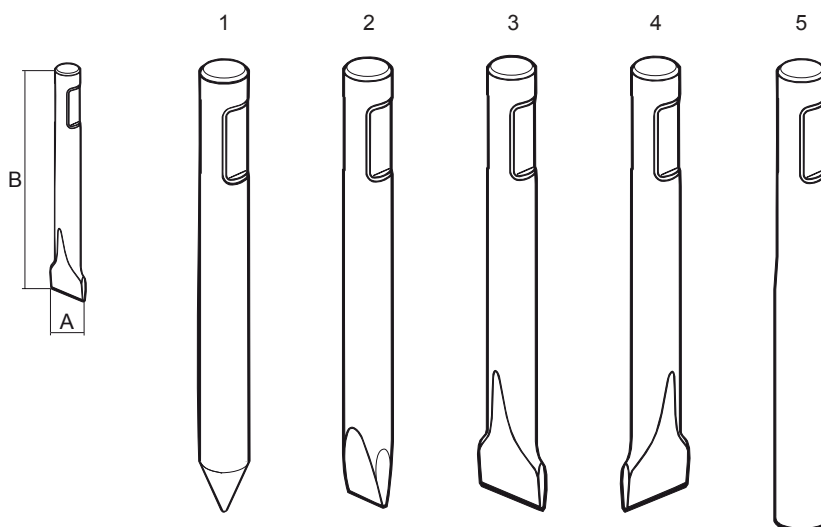
No.	Ordering No.	Quantity	Description
	3315 3521 50	1	Lower part kit
3	3315 2238 00	1	– Bushing
4	3315 0569 00	1	– Lock pin
5	0301 2405 00	1	– Lock buffer
7	0111 1517 00	2	– Tool retainer
	3315 0381 00	1	– Chisel paste 400 g

Optional equipment

Ordering No.	Quantity	Description
0909 1071 00	1	Grease gun
3363 0949 13	1	Chisel paste cartridge - 400g x 12
3362 2639 00	1	Chisel paste container - 15 kg
3362 2632 75	1	Chisel paste container - 45 kg
8202 5303 85	1	Central lub. system 12 V (incl. all nipples)
8202 5303 93	1	Central lub. system 24 V (incl. all nipples)
3176 6484 00	1	Lubricating hose (order correct length)

Working tools

Tool	Ordering No.	Tool width (A) (mm)	Tot. length (B) (mm)	Weight (kg)	Description
1	3083 3162 00	65	600	13	Moil point
2	3083 3161 00	62	600	13	Narrow chisel
3	3083 3163 00	125	650	15	Wide chisel
4	3083 3167 00	125	650	15	Wide chisel indexed 90°
5	3083 3189 00	80	700	14	Blunt tool



Use only authorized parts. Any damage or malfunction caused by the use of unauthorized parts is not covered by Warranty or Product Liability.

Any unauthorized use or copying of the contents or any part thereof is prohibited. This applies in particular to trademarks, model denominations, part numbers and drawings.



Any unauthorized use or copying of the contents or any part thereof is prohibited.
This applies in particular to trademarks, model denominations, part numbers and drawings.

© 2007 Atlas Copco Construction Tools AB, Stockholm, Sweden | No. 9800 0188 90c | 2007-01-29